

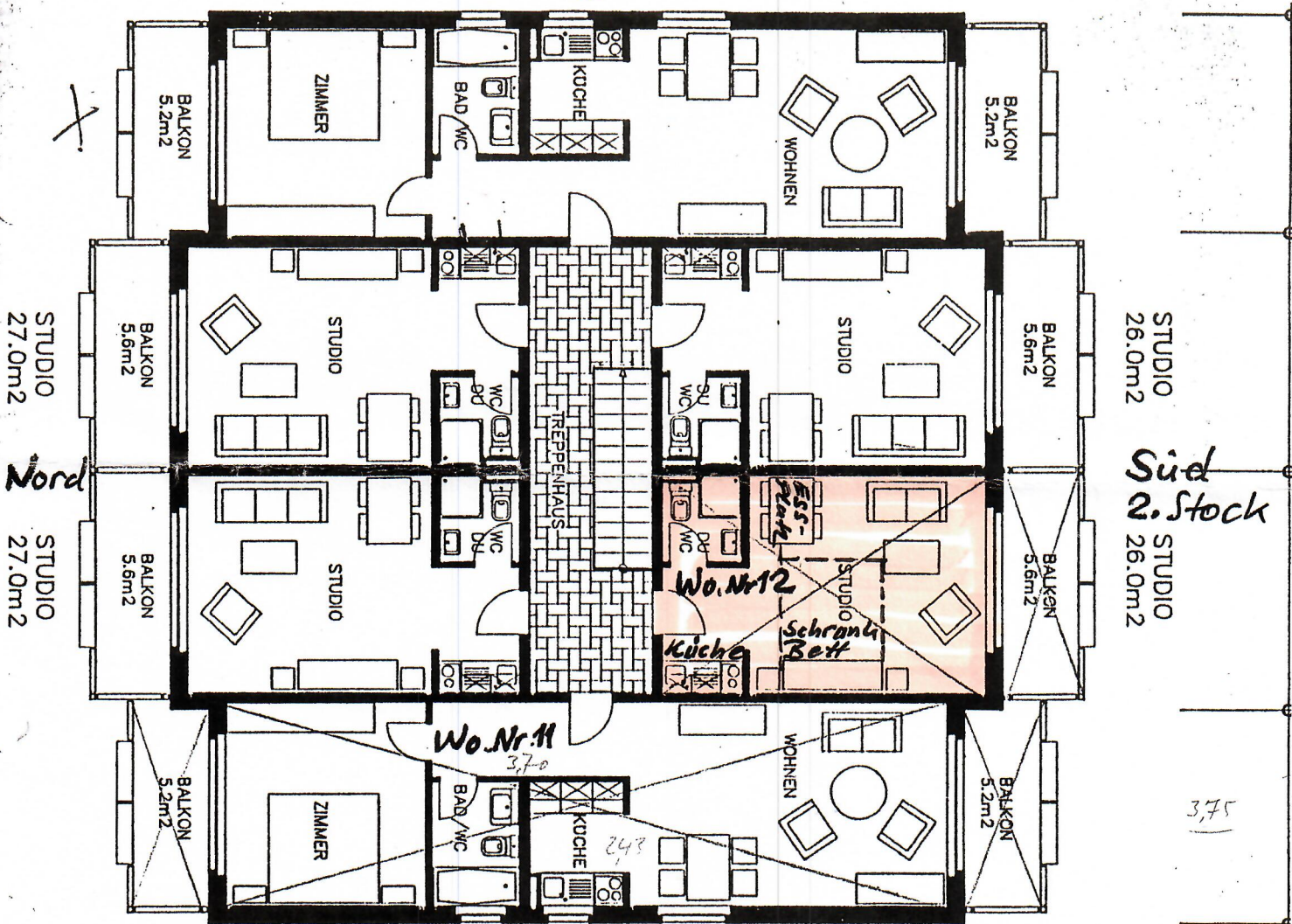
Plan

Tal



2 ZI-WOHNUNG  
58.0m<sup>2</sup>  
O. BALKON

58  
26  
84



STUDIO  
26.0m<sup>2</sup>

Süd  
2. Stock

STUDIO  
26.0m<sup>2</sup>

3,75

STUDIO  
27.0m<sup>2</sup>

Nord

STUDIO  
27.0m<sup>2</sup>

2 ZI-WOHNUNG  
58.0m<sup>2</sup>  
O. BALKON

Garageeinst. Platz e

13,36

13.90

