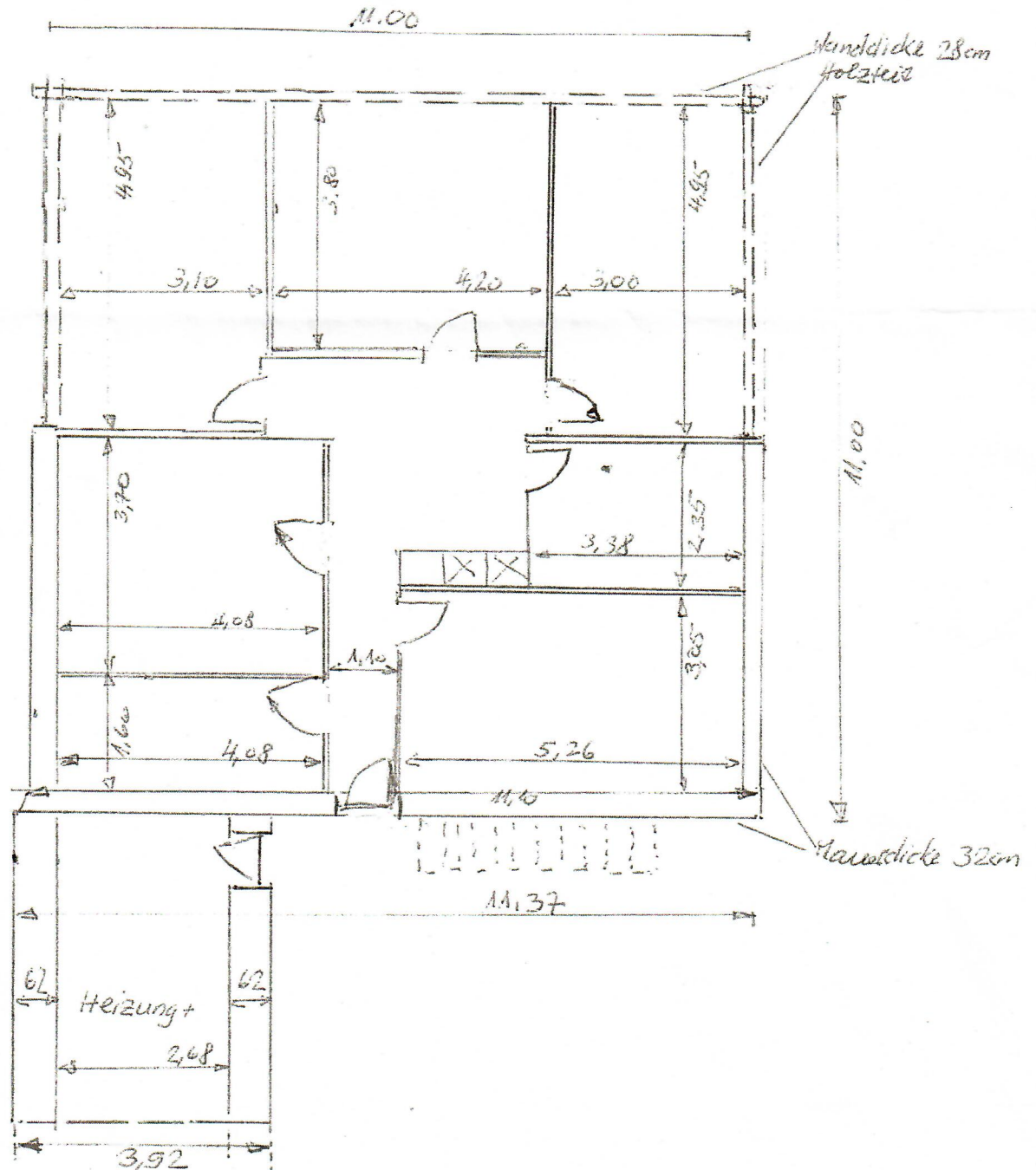


2. Stockwerk



Raumhöhe

2,10

Kubatur

$$11,0 \times 11,0 \times 2,10 = 254,1 \text{ m}^3$$

$$+ 3,92 \times 5 \times 2,10 = 41,2 \text{ m}^3$$

$$\text{Total} = 295,3 \text{ m}^3$$

Nutzfläche

$$10,44 \times 10,42 = 108,8 \text{ m}^2$$

$$+ 2,68 \times 4,68 = 12,5 \text{ m}^2$$

Heizung