

SAAL-STOCK

Raumhöhe

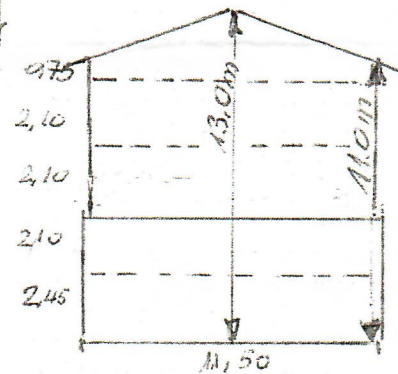
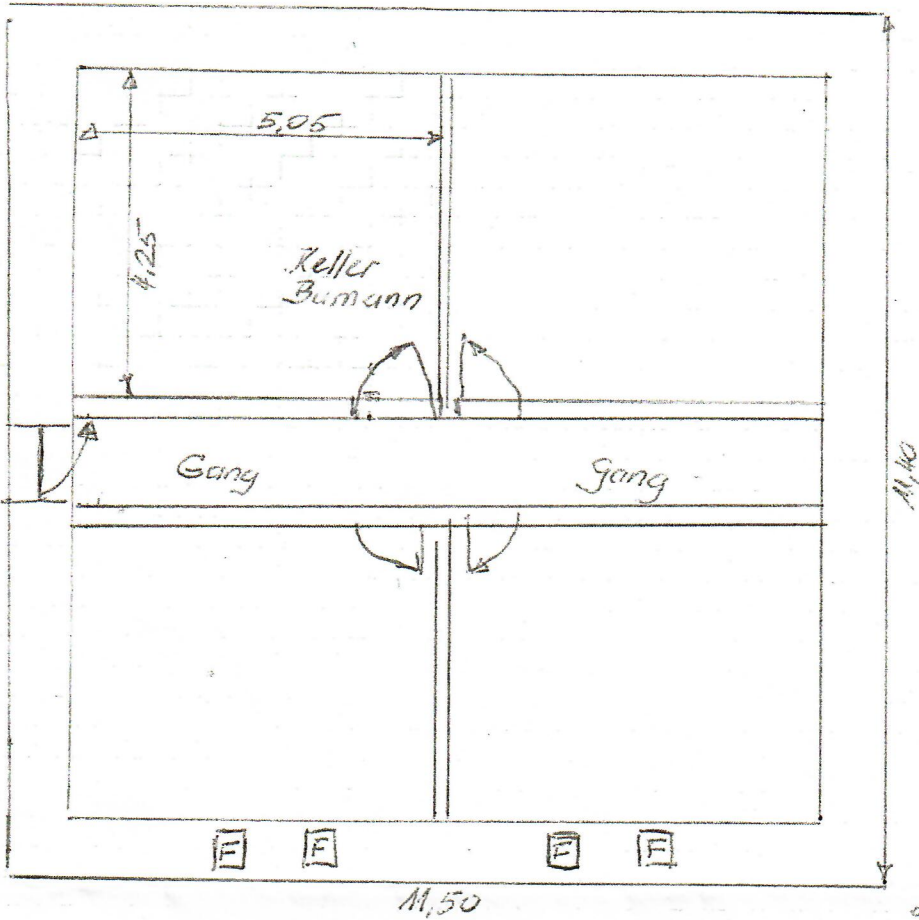
2,10

Kubatur

$$\frac{11,5 \times 11,4 \times 2,10}{4} = 68,8 \text{ m}^3$$

Nutzfläche

$$5,05 \times 4,25 = 21,5 \text{ m}^2$$



ERDGESCHOSS

Raumhöhe
2,45m

Kubatur

$$5,75 \times 7,0 \times 2,45 = 98,6 \text{ m}^3$$

Nutzfläche

$$4,6 \times 5,25 = 24,15 \text{ m}^2$$

